

# OLYMPUS

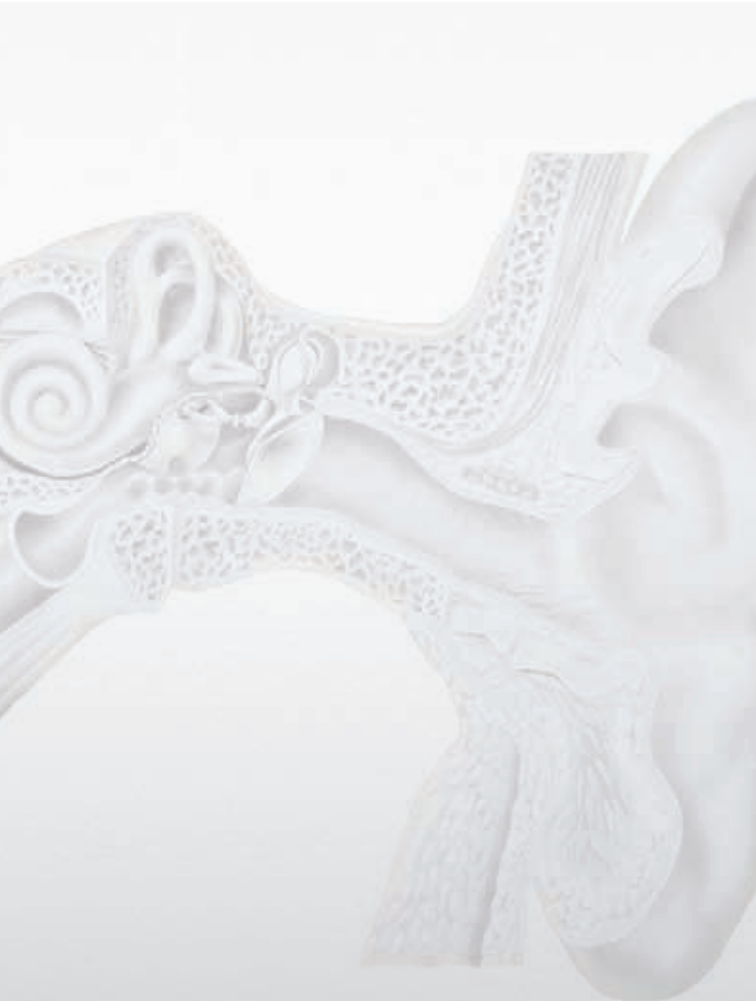
Your Vision, Our Future

ENT

## Bone Replacement System



### Quick Reference Guide



# QUICK GUIDELINES\*\*

## OtoMimix Indications For Use

### INCUDOSTAPEDIAL JOINT DISCONTINUITY

**1** Reconstructing the conductive component by placing a small aliquot of OtoMimix HA cement on discontinuity.



### REVISION STAPES REPLACEMENT DUE TO INCUS EROSION

**2** Keeping the prosthesis properly positioned about the vestibule by extending and connecting the piston loop and the distal incus remnant.



### STABILIZING THE CRIMPED LOOP ONTO THE INCUS

**3** Concerned about piston loop lifting off the incus, lock it down with a small aliquot of OtoMimix.



### NO MORE PROP AND PRAY

**4** Maximize columella prosthesis stability with an OtoMimix interface, connecting the prosthesis head to the malleus. (TORP or PORP)



## Mixing Guidelines\*

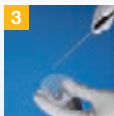
**1** Pour the powder, followed by the liquid, into a sterile mixing container taking care not to spill any material. Ensure that all contents of the vials have been emptied.



**2** Using an appropriate non-porous mixing instrument, mix the powder and liquid together for 30-45 seconds until a homogenous mixture is formed. (Do not use wooden tongue blade).



**3** Wait until a dough-like consistency has been achieved before applying OtoMimix. The dough-like consistency can be verified by using a Rosen needle to make an indentation in the cement which does not fill back in. Working time is typically 2-4 minutes. Allow the material to harden before closing. This can be verified by palpation with an appropriate instrument.



\* MIXING SHOULD ALWAYS BE PERFORMED BY THE OPERATING SURGEON. All mixing times are approximate and may vary. Mixing container and spatula not included with product.

---

## Surgical Technique

---

1. Prior to using OtoMimix, complete all mastoid and middle ear removal of disease. After creating as bloodless a field as possible, place all grafts and supporting absorbable materials.
2. If a prosthesis is to be secured with OtoMimix, check the fit and length of the prosthesis. Next, remove a small area of the mucosal layer on the manubrium of the malleus and/or the lenticular process of the incus where the prosthesis will rest and/or OtoMimix will be applied. Place the prosthesis
3. After the site is prepared for OtoMimix placement (as described in steps 1 and 2), bring the OtoMimix onto the field and mix the liquid and powder thoroughly into a thick paste (see mixing guidelines). Pick up a small amount of prepared OtoMimix with the OtoMimix fork applicator or Rosen needle and apply to the ossicle/prosthesis or ossicle/ossicle interface. Carefully suction any OtoMimix that may spread to adjacent tissue. Allow the material to harden before closing. This can be verified by palpation with an appropriate instrument.
4. Once the OtoMimix is in place, do not disturb the repair for 5-7 minutes to allow the OtoMimix to harden. After 5-7 minutes, the OtoMimix may lose its sheen and will be hard to the touch. At this time the tympanic membrane flap can be brought over the repair and the ear closed.

NOTE: If any other repair is planned using OtoMimix (i.e. posterior canal wall reconstruction), repair these areas first before cementing the ossicular repair to avoid movement at the ossicle/prosthesis or ossicle/ossicle interface. OtoMimix is contraindicated for applications requiring placement directly on the footplate of the stapes.

\*\* These quick guidelines are not a substitute for reading and learning the Instructions For Use, provided with the OtoMimix System, prior to use.

## Ordering Information

Cat. No.	Description
EG70143266	OtoMimix - 2 gram
EG130725	Rosen Needle, Sharp
EG130726	Rosen Needle, Dul

The procedure contained herein is that of Joel A. Goebel, M.D., F.A.C.S., Professor and Vice Chairman, Otolaryngology-Head and Neck Surgery, Washington University School of Medicine and not Olympus and is not necessarily recommended by Olympus. OtoMimix is manufactured by Walter Lorenz Surgical, Inc., 1520 Tradeport Drive, Jacksonville, FL 32218.

Specifications, design and accessories are subject to change without any notice or obligation on the part of the manufacturer.

E0499115 · 3.000 · 03/10 · e7

**OLYMPUS**

---

**OLYMPUS EUROPA HOLDING GMBH**  
Postbox 10 49 08  
20034 Hamburg, Germany  
[www.olympus-europa.com](http://www.olympus-europa.com)