

OLYMPUS[®]

Your Vision, Our Future

**EVIS LUCERA
ELITE**

EVIS LUCERA ELITE COLONOVIDEOSCOPE

CF-HQ290L/I

Fantastic image quality and handling for colonoscopy

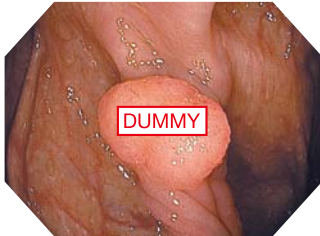




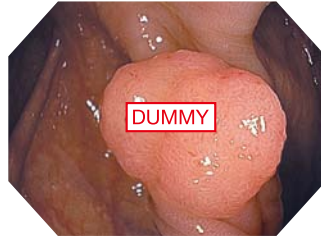
Main Features

Dual Focus

Dual focus, a unique OLYMPUS optical innovation allows the user to select from two focus settings. With the simple push of a scope button, the desired depth of field for observation can be optimized to either the near field or normal field and it delivers superior imaging at the same time.



Normal focus mode



Near focus mode

NBI (Narrow Band Imaging)

NBI in EVIS LUCERA ELITE provides twice the viewable distance of EVIS LUCERA SPECTRUM. The greatly improved performance of NBI opens up exciting new clinical applications and reinforces NBI's position as the standard of care for GI endoscopy.



RIT (Responsive Insertion Technology)

RIT combines three proprietary insertion tube technologies: HFT (High Force Transmission), PB (Passive Bending) and variable stiffness. These technologies are designed to facilitate complete colonoscopies by improving scope handling, insertability and ergonomics. PB helps EVIS LUCERA ELITE 290 Series scopes move through acute bends in the colon. HFT provides improved operator control for pushing, pulling and twisting maneuvers. Variable stiffness allows the physician to adjust the rigidity of OLYMPUS scopes as needed, by simply turning an adjustment ring on the scope control section.

Specifications

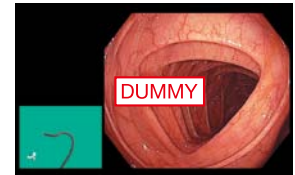
Optical System	Field of view	Normal focus mode 170° Near focus mode 160°
	Direction of view	Forward viewing
	Depth of field	Normal focus mode 9-100 mm Near focus mode 4-9 mm
Insertion Section	Distal end outer diameter	13.2 mm
	Distal end enlarged	
	Insertion tube outer diameter	12.8 mm
	Working length	L: 1680 mm I: 1330 mm

Water Jet

Water jet function is standard on EVIS LUCERA ELITE routine colonoscopes. This technology improves procedures and treatment.

ScopeGuide

ScopeGuide is an integrated technology in EVIS LUCERA ELITE CF-HQ290L/I. ScopeGuide provides real-time 3D visualization of scope position and configuration. This new level of visualization provides physicians with the ability to recognize loops as they form, potentially leading to shorter insertion time and less patient discomfort.



Waterproof One-touch Connector

A new connector design minimizes the effort required for setup prior to and in between cases. In addition, it is fully submersible and eliminates the need for a water-resistant cap and the associated risk of an expensive repair due to accidental immersion.



Instrument Channel	Channel inner diameter	3.7 mm
	Minimum visible distance	3.0 mm (Normal) from the distal end
Bending Section	Direction from which endotherapy accessories enter and exit the endoscopic image	
	Angulation range	Up 180° Down 180° Right 160° Left 160°
Total Length	L: 2005 mm I: 1655 mm	
Compatible EVIS LUCERA System	Video System Center OLYMPUS CV-290 Xenon Light Source OLYMPUS CLV-290SL, CLV-290	

Image courtesy of XXXXXXXXX, MD

Specifications, design and accessories are subject to change without any notice or obligation on the part of the manufacturer.